

A black and white photograph showing the back of a man lying down. His head is at the bottom of the frame, with dark, slightly messy hair. His back is the central focus, showing the spine and shoulder blades. His arms are bent and resting near his head. The background consists of a wrinkled, light-colored fabric, possibly a bedsheet. The lighting is soft, creating subtle shadows on his skin.

behold the man

behold the man







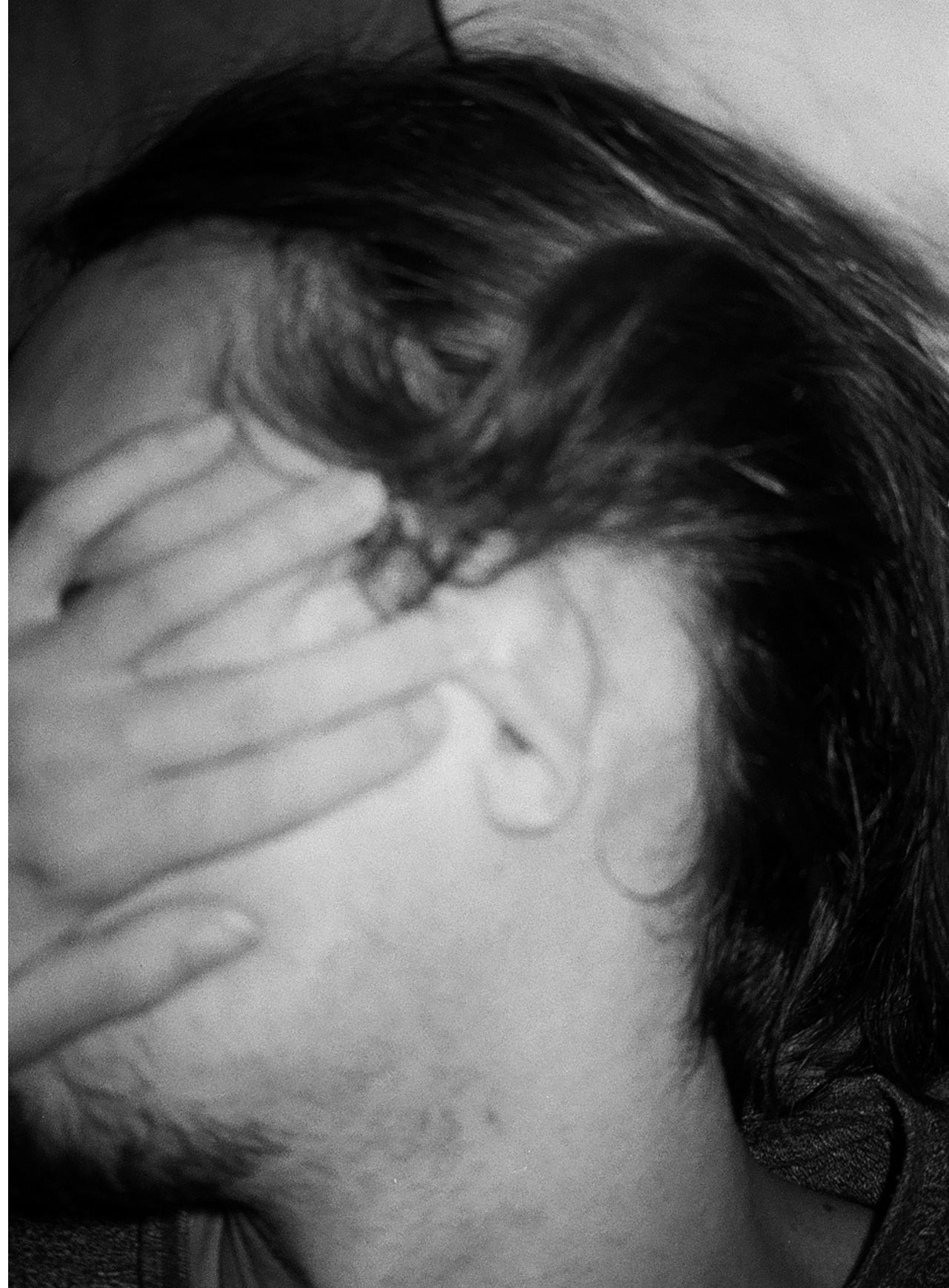










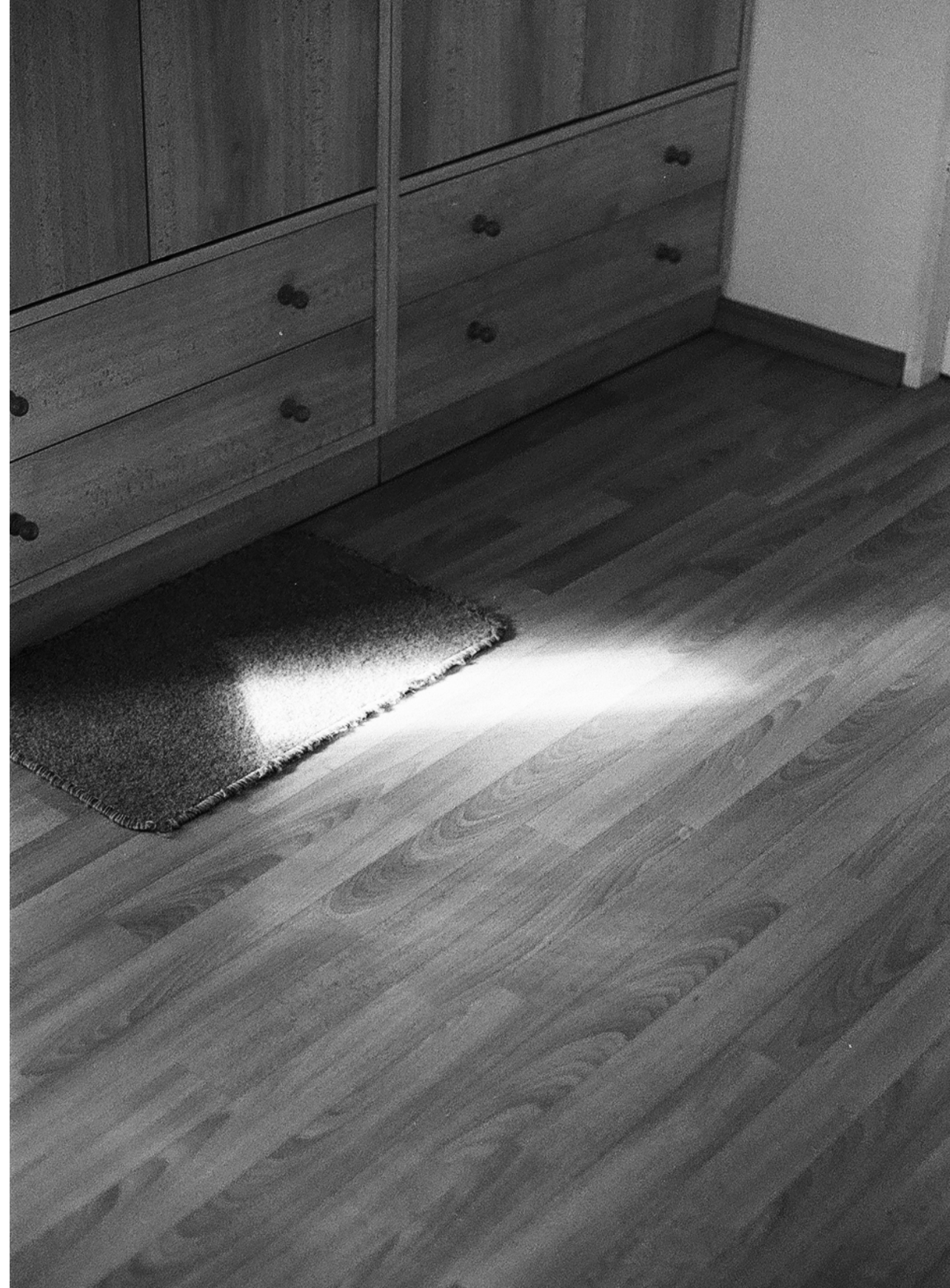


























































14

2009







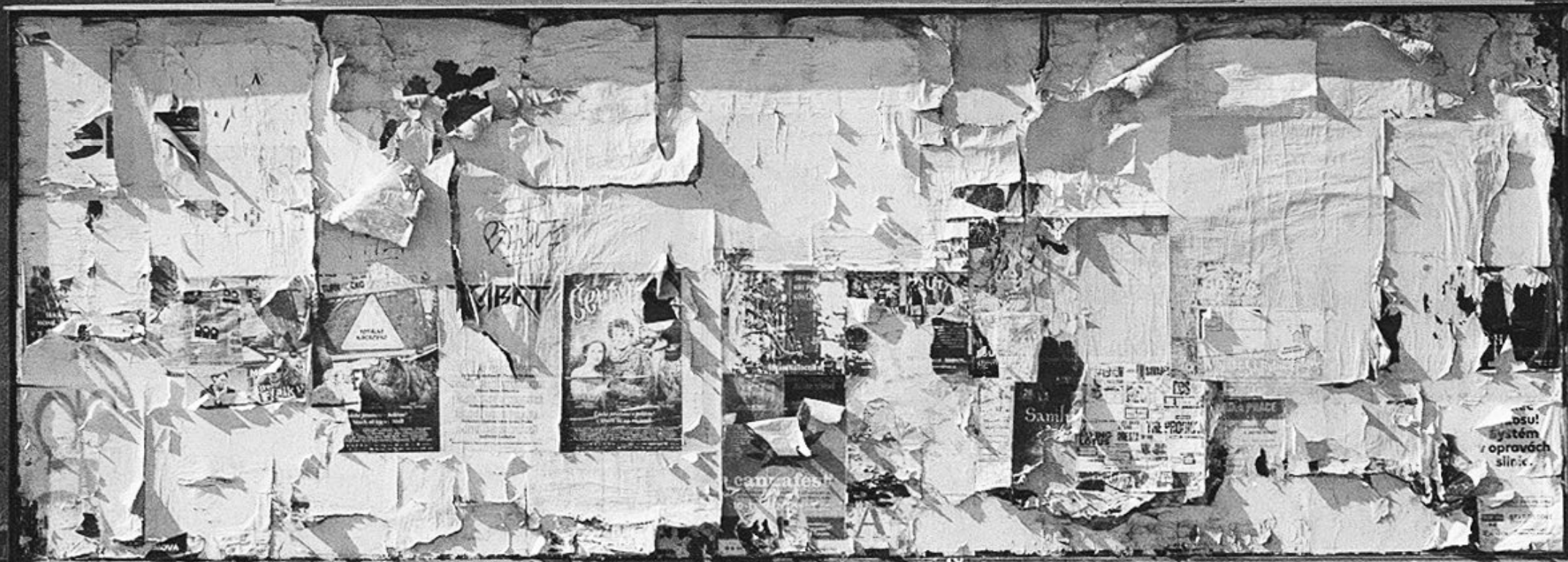




VÝLEP PLAKÁTŮ V PRAZE

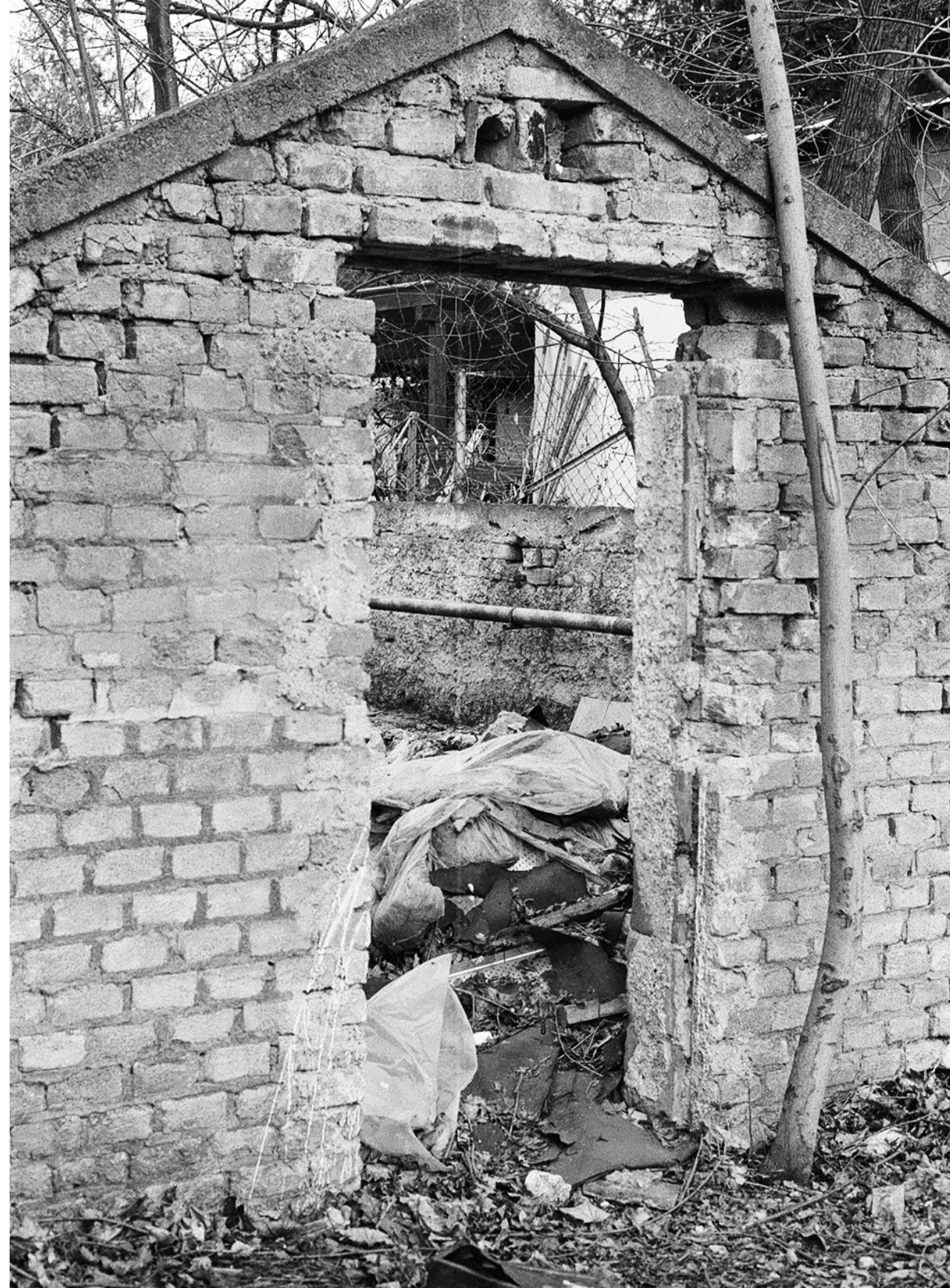
www.rengl.cz

841 601 841



































behold the man

Vendula Zouzalíková

2021



